

# Beyond Standard

Solutions for Medical Applications

gevasol  
fluid and motion control



Fluid  
Control

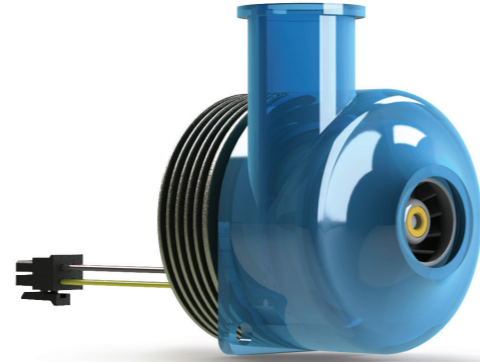
Built to Need

## Ventilator

### P-Series

#### Customizable micro blower

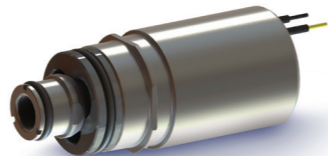
Designed for respiratory assistance. Works with oxygen-enriched air flow. **Optional:** The P-Series blower's integral drive and control allow it to adapt its air flow and pressure.



### P447HF

#### High flow proportional valve

The P447HF is ideal for blending and mixing oxygen, air, or other gases with high precision. High speed and sensitive regulation of the valve make it perfect for all gas dosing up to 200 l/min @2.4 bar.



### P447BP

#### Proportional Mixing Valve

The P447BP is a proportional valve with venturi for mixing applications. It is ideal for applications with high back pressure such as mixing gases in a tank, piloting venturi injectors for high flow applications, regulating pressure on membranes. Flow up to 140 l/min @2.4 bar.



### P377

#### Precision proportional pilot dosing valve

The P377 is the perfect choice for precision blending, CPAP, or ventilation valves with high back pressure. The P377 can pilot a pressure regulator valve or generate an air jet to create the needed lung pressure. Due to its small footprint and accurate fast response time, it is a versatile solution. Available in flows from ml/min up to 80l/min range, supporting pressures up to 12 bars. The response time below 5ms makes it the right choice for assisted ventilation.



### P261

#### High flow ventilator valve

The P261 delivers up to 300l/min flow. The robust construction is ideal for forced ventilation delivering a repeatable flow profile.



## Oxygen Dosing

### P357

#### 2/2NC valve for O2 valve bloc

This valve is a perfect solution for dosing either in forced or assisted mode extra O2 for patients needing of O2 content higher than in air. The valve can also be mounted on a manifold in series to limit the number of O2 bottles. The flow rate matches the need for O2.



## Anesthesia

### P377

#### Proportional dosing valve

The P377 can be delivered with elastomers, thus supporting the harshest gases. It is combined with a stainless steel valve resulting in a minimal leakage rate; it is the perfect choice for high-ratio, accurate delivery of anesthesia gases.

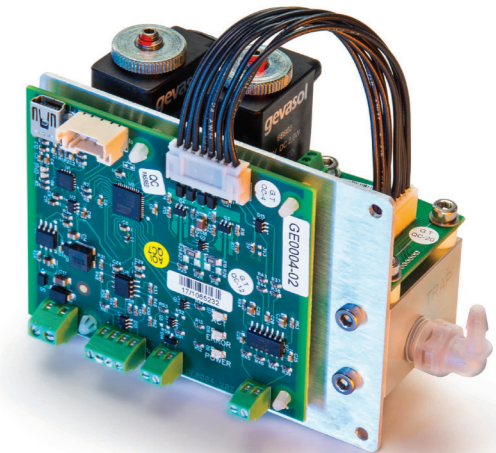


## Intubation

### P289

#### Precision vacuum regulator

The P289 is a very sensitive precision vacuum regulator able to maintain few cmH2O depression. It keeps the intubation tubes in position and relieves the pain of breathing during pneumonia. It regulates the vacuum while measuring the flow. The flow is a good indicator of any system dysfunction such as tube leakage or blockage.

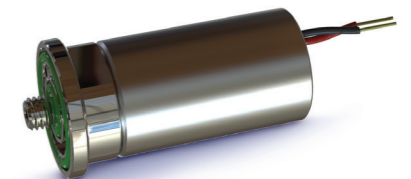


## Surgery Equipment

### P377HP

#### High pressure small flow proportional valve

The P377 valve receives up to 70 bar inlet pressure. It can be used for test tools, CO2 cryosurgery, flow and pressure regulation in catheters.



## Custom Solutions

### Built to Need

Gevasol's engineers customize flow, pressure characteristics, material, and flow connections. Careful design and stringent production quality within the ISO 13485 environment guarantee the flawless operation of our products.

For a short time to market, many industry-standard footprints are available.

## Production

### Manufacturing Capabilities

All our valves are degreased for O<sub>2</sub> and assembled in a clean environment.

All valves have unique identification with full traceability, and stored calibration curves, for after sale support.



## About Gevasol

Gevasol is a family-owned industrial group.

We have six R&D centers and eight manufacturing facilities around the world.

