

Lightweight High-Speed Centrifugal Blower

gevasol Ping

December | 2021



- Medical equipment
- Ventilators
- Respiratory assistance systems

P-500 Series

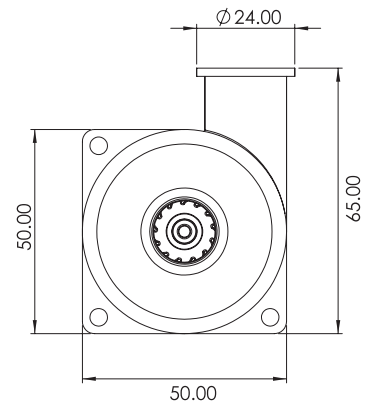
Lightweight blower designed for respiratory systems

Its low weight allows for integration with portable devices. It is designed to work with oxygen-enriched airflow. The design supports adaption to a wide range of OEM system requirements.

The optional P-500 blower's integrated drive controls the impeller speed based on a system input command; it can adjust to a desired flow and pressure working point within the specified performance envelope.

Main Specifications

- **Input Voltage** 24 (VDC)
Can be adapted, per request, by motor winding
- **Power** Up to 50 (W)
- **Motor** Low cogging BLDC
- **Commutation** Sensor-less or hall effect.
- **Speed Range** Up to 55,00 (RPM)
- **Free flow** 250 700 (l/min.)
- **Drive** Optional: Integrated, separated
- **Drive** Optional, Integrated or separated
- **Communication** Optional: RS 485/CAN
- **Dimensions** $\Phi 50 \times 45-100$ mm



Challenge us with your needs gevasolfluid@gevasol.com

gevasol
fluid and motion control
www.gevasol.com