

gevasol Xpress

June | 2024

No.29



Featured Product
[Page 3]



Beyond Standard



Scan to sign up for our mailing list!



10 - 14 June 2024

Precision Miniature Proportional Valves for Gases up to 70 Bars

Gevasol has an extended range of precision proportional valves up to 70 bars.

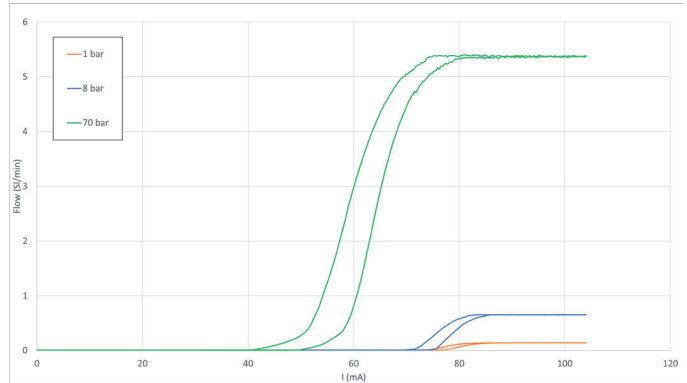
- Sturdy construction and high-tech material allowed us to raise the pressure limit from 12 to 70 bars.
- Tiny flows limited by orifices of 0.1 to 0.5 mm allow gas injection up to 70 bars with an excellent, controllable flow.
- A meager leakage rate of below 1ml/min

Advantages

- Operate over a wide pressure range
- High resolution with a stable, repeatable flow curve
- Small form factor
- Easy mounting in manifolds
- Low power consumption
- Low leakage
- Small dead volume

Applications

- Spectroscopy
- Chromatography
- Flow regulation
 - Back pressure
 - Downstream pressure



Instrumentation Valves



Positioner

Flow and Pressure Controller for Hydraulic Actuators

- <1% precision regulation up to 16 bars
- Up to 5 years maintenance-free operation on battery
- Data logging and transmission
- Battery powered (life time: 5 years)

Function:

Upstream, downstream pressure regulation, flow regulation, filling

Applications:

Industrial valve control



Media-separated Solenoid Valve

P107

- Function: 2/2NC
- Orifice: up to 4 mm
- Flow: kv up to 6.5 l/min
- Pressure: up to bar
- Vacuum: up to 8 bars

Applications:

Ammonia, H₂, neutral and aggressive gases and liquid handling



High Flow Proportional Valve for Gases

P447

- Flow: kv up to 4.5 l/min
- Pressure: 0 to 7 bar

Application:

Flow or pressure control



P370

for Aggressive Liquids and Gases

- Function: 2/2NC
- Orifice: up to 8 mm
- Flow: up to 20 l/min
- Vacuum and low pressure
- 10 M cycles

Applications:

- Fuel cell
 - Air and H₂ control
 - UHP water control



Proportional valves

P377

- Orifice size: 0.05 to 2 mm
- Pressure: up to 70 bars

Applications:

Fluid and gas flow or pressure control



Flow Regulator

CFR – P377

- Function: downstream pressure or flow regulator
- Orifice: 0.1 to 1.2 mm
- Pressure: vacuum to 10 bars

Application:

Dosing, fuel-cell pressure regulation

Gevasol Ettem Sealing Solutions

For extreme and non-standard applications.



- In-house infrastructure for assembly, testing, and unique processes
- Design and build customized sealing solutions for OEM industrial applications

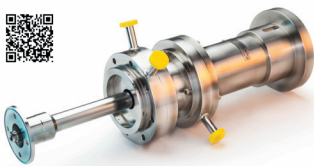
Advanced fluid film techniques of contact, near-contact, and non-contact for:

- Highly corrosive media applications
- Slurry solutions
- Fluid with high vapor pressure

The sealed-for-application product range includes:

- Catalog items
- Custom-engineered seals
- Complete rotary assemblies

Applications: Energy, chemical, pharma, defense, and petroleum.



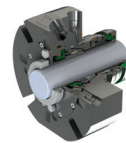
Top Entry Drive Unit for a Bio-Reactor

DU00537

- Speed: 300 RPM
- Pressure: up to 100 PSI*
- Temperature: up to 300°C
- Media: biological fluids

Applications:

Dual bio reactor

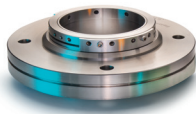


682CQ

- Temperature Range (°C): -30°C to 260°C
- Pressure Range (bar): vacuum to 40 bar
- Speed Range (m/sec): up to 20 m/sec

Applications:

Oil and gas



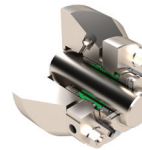
Closed Cycle Gas Turbines Mechanical Seal

SL00306

- Speed: up to 2500 RPM
- Process pressure: up to 5 bar
- Temperature: up to 120°C
- Media: hydrocarbon vapor

Applications:

Organic power turbines



230CD/CDS/CDOS

- Heavy duty universal dual cartridge seal
- Most resistant to system-side / barrier-fluid pressure reversals
- Double balanced for pressurized or unpressurized service

Applications:

OEM, green energy



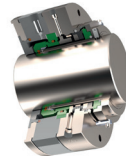
FRU - Fluid Rotary Union for Radar Antenna

FRU00756004

- Speed: 35 RPM
- Process pressure: up to 180 PSI
- Temperature: -40°C to 60°C
- Media: coolant fluid

Applications:

Radar antennas and other applications that require high-flow fluid



SLT00574M

- Speed (RPM): Up to 1,100
- Process pressure: up to 7 bar
- Process temperature (°C): up to 50°C
- Media: 5% P2O5, 3% fluorides, 150 ppm chlorides + 40% gypsum solids
- Dual ash BGA 10x10 SRH pump seals

Applications:

OEM, chemicals

Reliability Lab

The Gevasol Group operates a reliability lab in the Netherlands.

Gert Kragten, PhD, who holds a black belt certification as a reliability engineer, is at the helm.

The lab performs reliability tests on Gevasol's products, including:

- lifetime testing
- failure analysis
- reliability simulation and calculation

The lab generates and maintains a life-database of test methods and results. This allows us to test similar products in the same way.

Comparing products performance from the field with the mechanisms found in the development phase improves the testing reliability—and the reliability of Gevasol's products.



Keep in touch!



Gert van Emmerik

After completing his technical education, Gert first solved a production backlog of a Nutella-like product. He later gained experience in metal, logistics, and agriculture, focusing on designing custom solutions for customers.

At a glance:

- Lives in Weesp, an old city 20 km south of Amsterdam
- Married to **Rosmarie**
- Father to **three young men**
- Hobbies: "As a Dutch guy, I love football and Austrian cakes!"

gert@gevasol.com



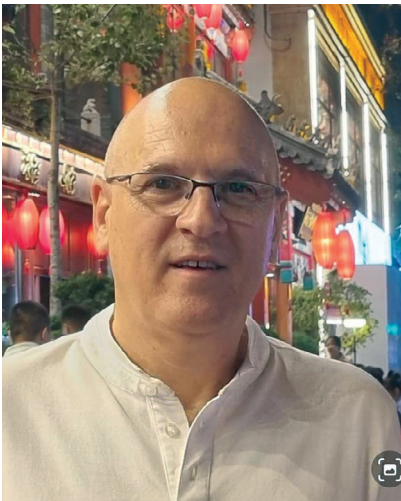
Balázs Janossy, PhD

Dr. Janossy, a physicist and director of business development at Gevasol's Fluid Control Division, has extensive experience in fluid control and sensor technology, specializing in automotive sensor development and fluid automation systems.

At a Glance:

- Lives in Geneva, Switzerland
- Married
- Father of three
- Hobbies: Go on hikes

bjanossy@gevasol.com



Danny Cohen, MBA

Danny, with twenty-nine years of management experience in the thermal imaging industry, transitioned from military to civilian applications. In 2022, he became CEO of Gevasol Ettem sealing Solutions.

At a glance:

- Lives in Israel in the Haifa metro area
- Married to **Sigalit**
- Father of **Dor** and **Roni**
- Hobbies: Gardening and constructing facilities for a smart home

danny.cohen@ettem.com