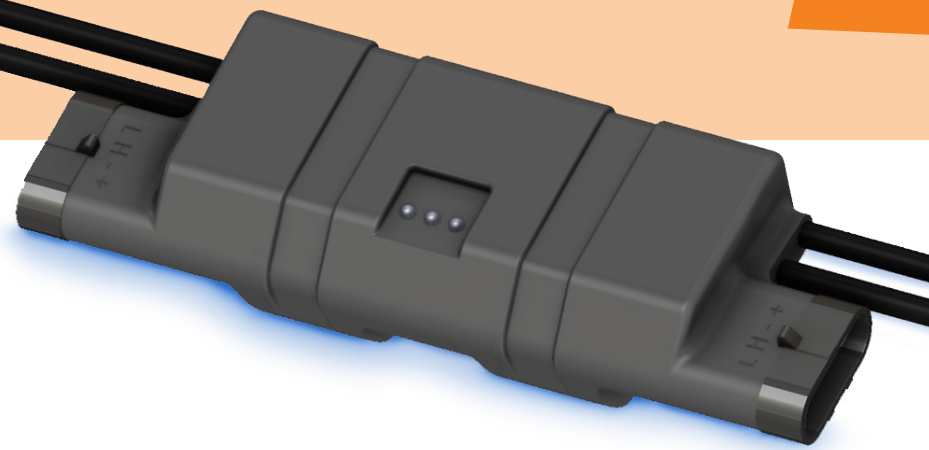


CAN Bus Multiple
Solenoid Valves Drive

gevasol
Ping

July 1 2024

- Spraying and Environmental systems
- Agriculture
- Industrial machinery



Precision Control for Spraying Systems

The E402 is a CAN bus communication driver specially designed for spraying valve arrays, facilitating exact dosing, high-speed operation, and real-time fault detection. It supports large, modular systems with individual valve control, suitable for precision-critical applications.

Key Features

- Exact dosing rate with 0.1 ms resolution and reproducibility, enabling tractor speed over 40 km/h
- A wide operating pressure range for precise droplet size generation
- String of more than 100 valves, each independent
- CAN bus addressable with a maximum response time of 5 msec for a full string with up to 50 modules
- Cycle and error counter

Challenge us with your needs: Marketing@gevasol.com